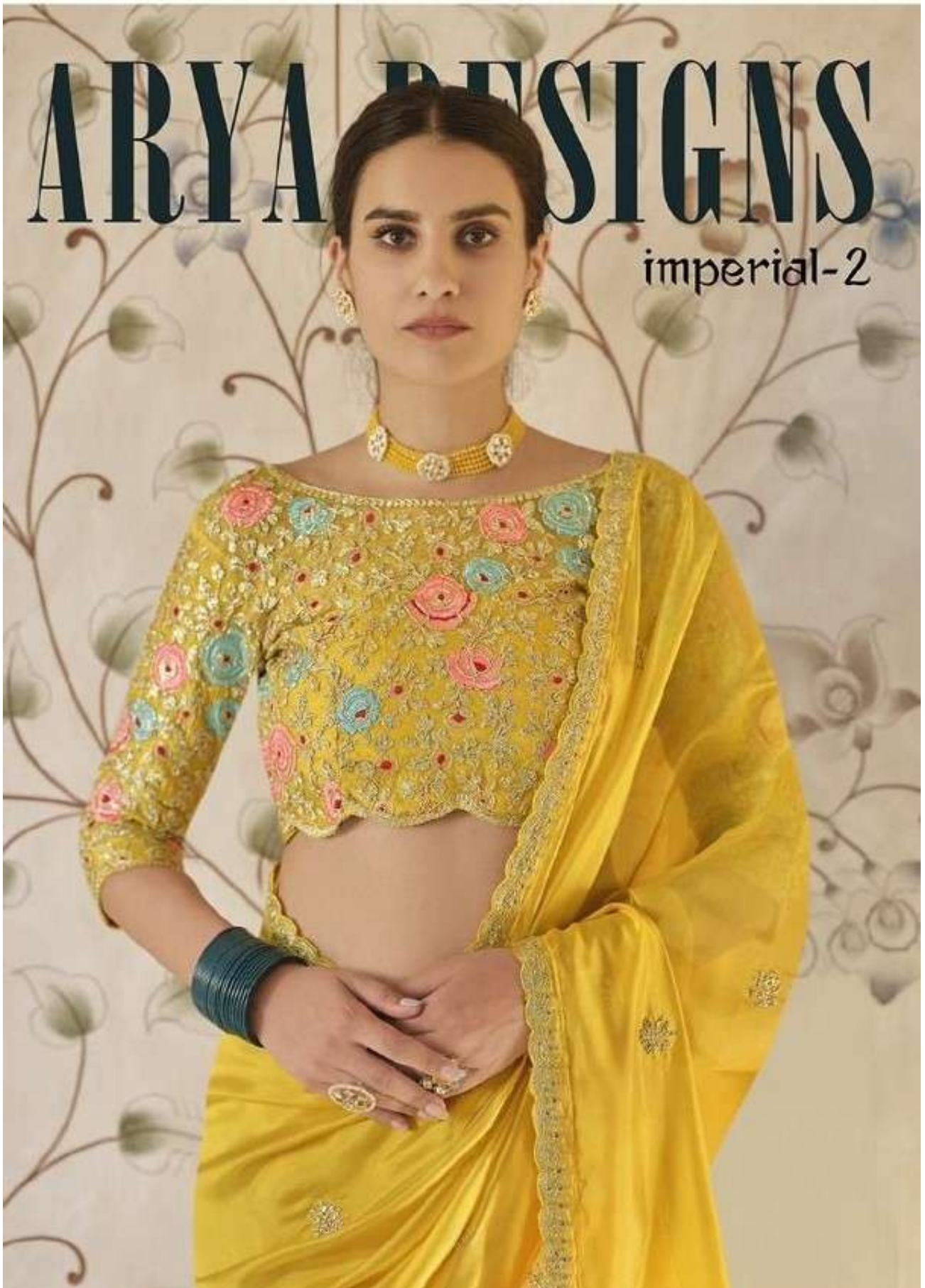


ARYA DESIGNS

imperial-2



A woman with long dark hair is seated on an ornate wooden chair. She is wearing a vibrant green silk saree with a gold border and a matching blouse. Her jewelry includes large gold earrings, a choker necklace with red and green beads, and multiple gold bangles on her right wrist. The background is a warm, golden-brown wall with a decorative wooden frame.

*Aura*TM
An  Product

Silk Diamond

A woman with long dark hair is seated on an ornate wooden chair. She is wearing a vibrant green silk saree with a gold border and a matching blouse. Her jewelry includes a large gold necklace with red and green beads, large gold earrings, and multiple gold bangles on her right wrist. The background is a warm, golden-brown wall with intricate carvings.

*Aura*TM
An  Product

Silk Diamond