

bhkala®

Bridesmaid
Vol. 9

1505



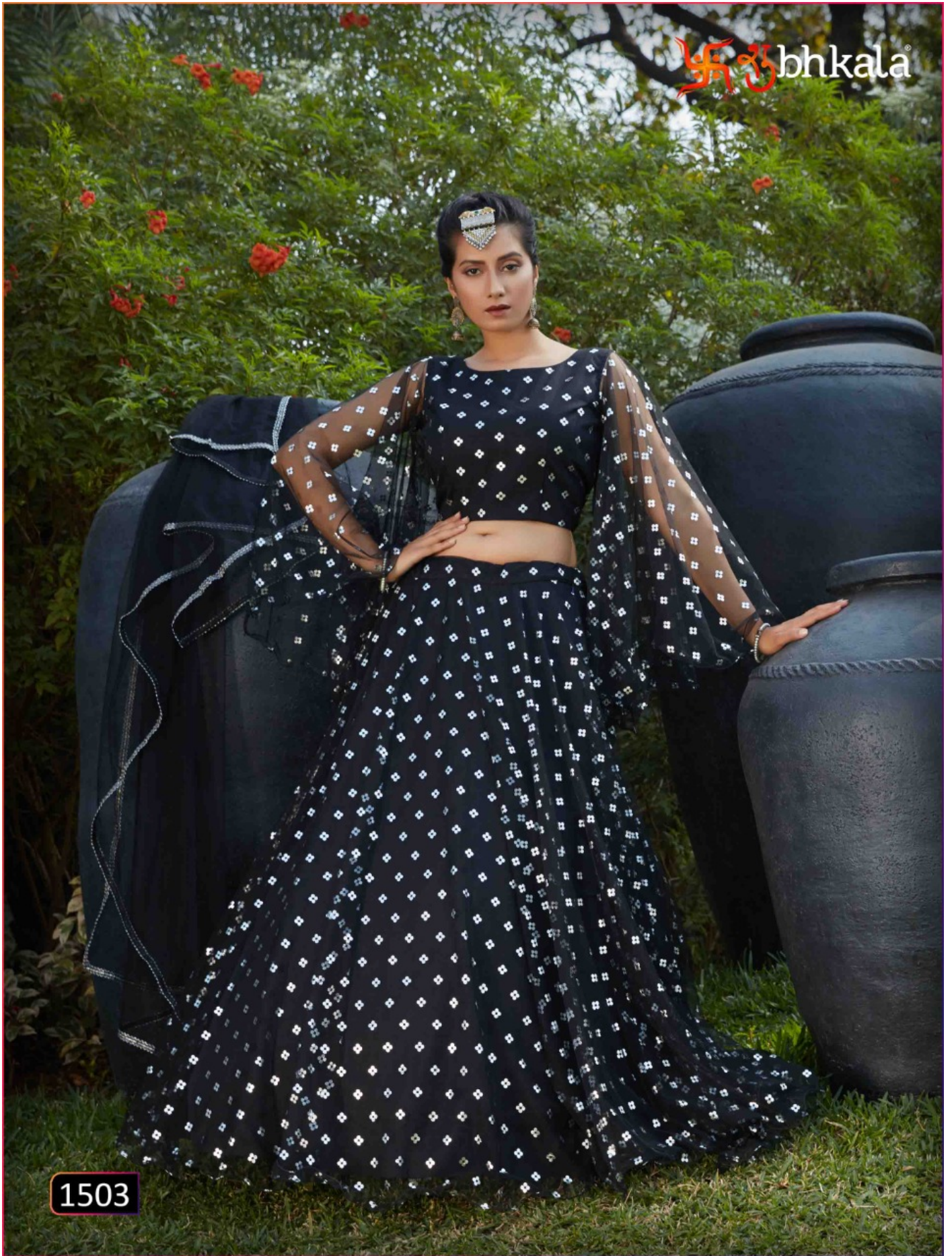
1501



1502



1503





1504

1506



Bridesmaid

Vol. 9

Design NO. (SKU)	Lehenga Color	Lehenga Fabric	Choli Fabric	Dupatta Fabric	SIZE (SEMI-STITCHED)	Lehenga Work	Choli Work	Dupatta Work	Choli Length (MTR)	Lehenga Length (INCH)	Dupatta Length (MTR)
1501	White - Wine	NET	Cotton Silk	NET	UPTO 42 BUST AND WAIST	Metalic Foil Printed Work	Pigment Foil Work	Metalic Foil Printed Work	1	42	2.40
1502	Yellow - Green - Pink	NET	Taffeta Silk	NET	UPTO 42 BUST AND WAIST	Metalic Foil Printed Work	Thread With Sequence Embroidered Work	Lace On Border	0.80	42	2.10
1503	Black	NET	NET	NET	UPTO 42 BUST AND WAIST	Metalic Foil Printed Work	Metalic Foil Printed Work	Metalic Foil Printed Work	1.5	42	2.40
1504	Pink	NET	NET	NET	UPTO 42 BUST AND WAIST	Pigment Foil Work	Pigment Foil Work	Thread Embroidered Work	1	42	2.40
1505	Navy Blue - Yellow - Pink	NET	Georgette	Georgette (KOTI FABRIC)	UPTO 42 BUST AND WAIST	Metalic Foil Printed Work	Na	Pigment Foil Work(Koti Work)	0.80	42	1 MTR (Unstitched Koti)
1506	Pink - White	NET	Cotton	NET	UPTO 42 BUST AND WAIST	Metalic Foil Printed Work	Thread With Sequence Embroidered Work	Metalic Foil Printed Work	1	42	2.40

THIS BOOK / CATALOGUE / LOGO / ARE PROTECTED UNDER COPYRIGHT ACT.
 AN ILLEGAL/UNAUTHORIZED REPRINT, PUBLISHING, REPRODUCTION, DISTRIBUTION AND MODIFICATION OF ANY IMAGES, PHOTOGRAPHS AND PRODUCTS, TOTALLY OR IN PART, FOR ANY PURPOSE, REASON OR CAUSE IS STRICTLY PROHIBITED AND PUNISHABLE UNDER LAW.



1501



1502



1503



1504



1505



1506